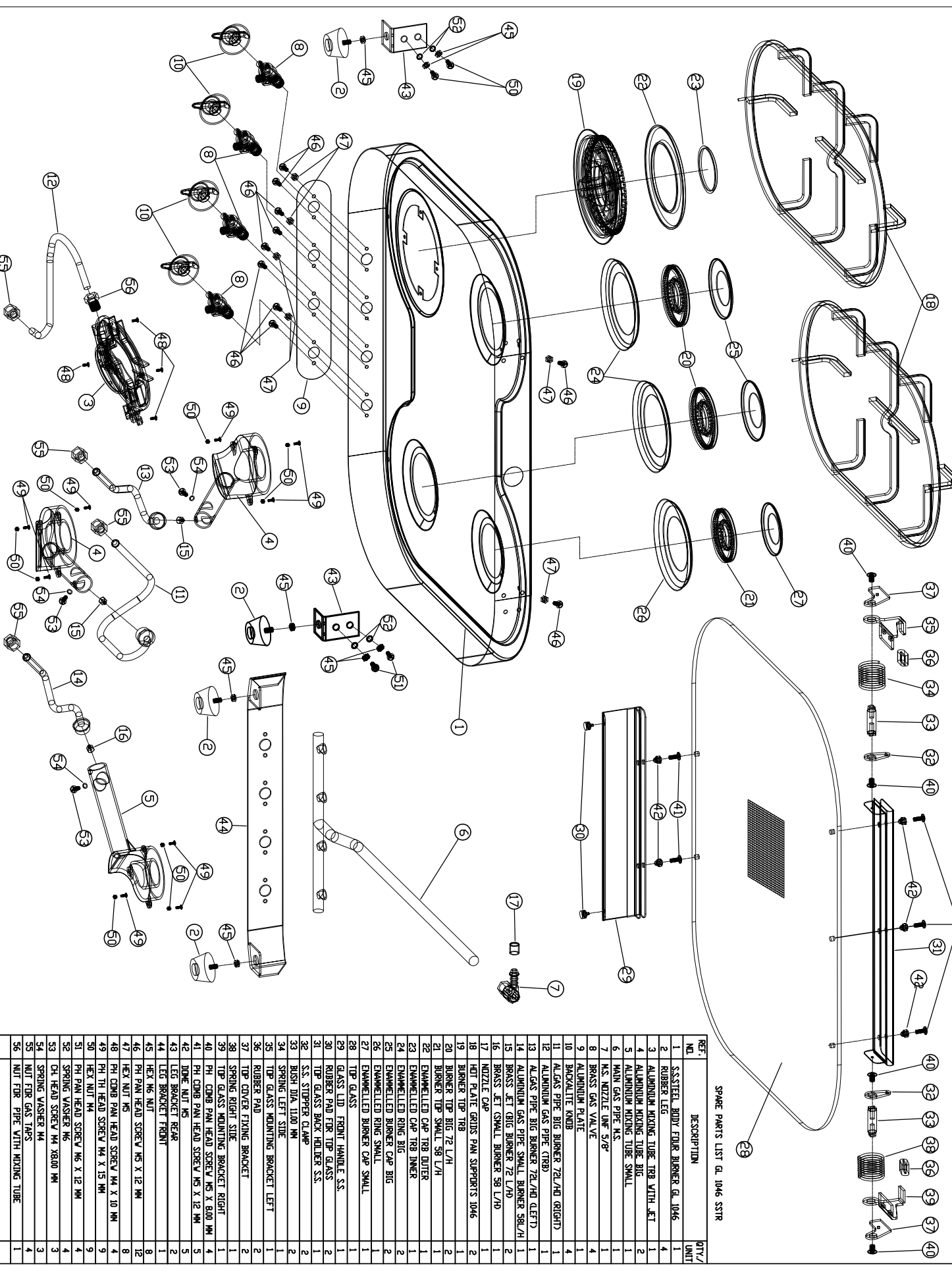


# G.I. 1046 SSTR



SPARE PARTS LIST Q.L. 1046 SSTR

REF. NO.	DESCRIPTION	QTY/UNIT
1	SSSTEEL BODY FOUR BURNER Q.L. 1046	1
2	RUBBER LEG	4
3	ALUMINUM MIXING TUBE TRB WITH JET	1
4	ALUMINUM MIXING TUBE BIG	2
5	ALUMINUM MIXING TUBE SMALL	1
6	MAIN GAS PIPE M.S.	1
7	M.S. NOZZLE TWP 3/8"	1
8	BRASS GAS VALVE	1
9	ALUMINUM PLATE	4
10	BACKLITE KNOB	1
11	AL GAS PIPE BIG BURNER 72/40 (RIGHT)	4
12	ALUMINUM GAS PIPE (TRB)	1
13	AL GAS PIPE BIG BURNER 72/40 (LEFT)	1
14	ALUMINUM GAS PIPE SMALL BURNER 58/41	1
15	BRASS JET (BIG BURNER 72 L/H)	2
16	BRASS JET (SMALL BURNER 58 L/H)	1
17	NOZZLE CAP	1
18	HOT PLATE GRID PAN SUPPORTS 1046	1
19	BURNER TIP TRB	2
20	BURNER TIP BIG 72 L/H	1
21	BURNER TIP SMALL 58 L/H	2
22	ENAMELLED CAP TRB OUTER	1
23	ENAMELLED CAP TRB INNER	1
24	ENAMELLED RING BIG	2
25	ENAMELLED BURNER CAP BIG	1
26	ENAMELLED RING SMALL	1
27	ENAMELLED BURNER CAP SMALL	1
28	TIP GLASS	1
29	GLASS LID FRONT HANDLE S.S.	1
30	RUBBER PAD FOR TIP GLASS	2
31	TIP GLASS BACK HOLDER S.S.	1
32	S.S. STOPPER CLAMP	2
33	BUSH DIA. 1100 MM	2
34	SPRING LEFT SIDE	1
35	TIP GLASS MOUNTING BRACKET LEFT	1
36	RUBBER PAD	2
37	TIP COVER FIXING BRACKET	2
38	SPRING RIGHT SIDE	1
39	TIP GLASS MOUNTING BRACKET RIGHT	1
40	PH COMB PAN HEAD SCREW M4 X 8.00 MM	4
41	PH COMB PAN HEAD SCREW M5 X 12 MM	5
42	DOPE NUT M5	5
43	LEG BRACKET REAR	2
44	LEG BRACKET FRONT	1
45	HEX M6 NUT	8
46	PH PAN HEAD SCREW M5 X 12 MM	12
47	HEX NUT M5	8
48	PH COMB PAN HEAD SCREW M4 X 10 MM	9
49	PH TH HEAD SCREW M4 X 15 MM	9
50	HEX NUT M4	9
51	PH PAN HEAD SCREW M6 X 12 MM	4
52	SPRING WASHER M6	4
53	CH HEAD SCREW M4 X8.00 MM	3
54	SPRING WASHER M4	3
55	NUT FOR GAS TAPS	4
56	NUT FOR PIPE WITH MIXING TUBE	1